

CLIP TECHNOLOGY IN SPRING LOADED CONTACTS

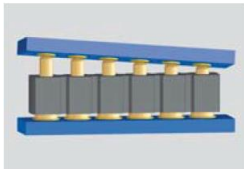


preci-dip

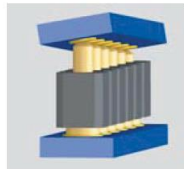
SPRING LOADED CONTACTS

A flexible solution for your connections

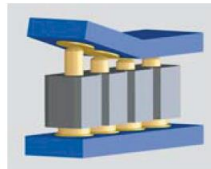
Spring Loaded **Contacts are really useful**: they facilitate blind mating requirements, are more tolerant to misaligned and non-coplanar mating conditions, and are capable of achieving up to one million mating cycles.



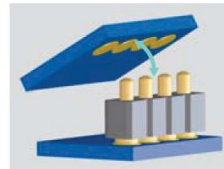
Accepts important positioning tolerances of the connectors



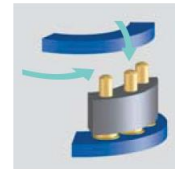
Connects surfaces non-perpendicular to



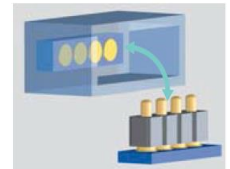
Compensates errors of parallelism and flatness



Connects pivoting or rotating elements



Connects with sliding mating action (push & lock)

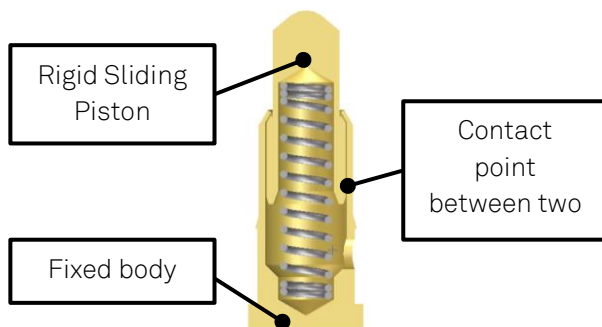


Suitable for blind mating

STANDARD OR CLIP DESIGN

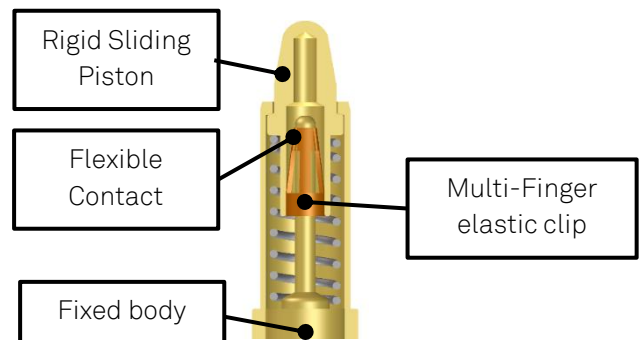
Comparison between two main technologies in spring loaded contacts

Spring Loaded Contacts With Standard design



Rigid contact point will disconnect under shock and vibration conditions. This solution is only suitable in static-mode and low current applications.

PRECI-DIP Spring Loaded Contacts With an Integrated CLIP



An integrated Multi-Finger elastic clip establishes a reliable and efficient multi point connection between body and piston. Flexible contact is compliant to shock and vibration up to 2000Hz or more, and currents up to 20A.

MANY APPLICATIONS OF PRECI-DIP PATENTED CLIP TECHNOLOGY

AERO



Docking station for control panels in aircraft.
FIRST MATE/LAST

MILITARY



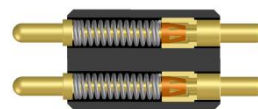
Interposer for military MANPACK RADIO
1,27mm pitch

MEDICAL



8 ways connector for respiratory devices

AUTOMOTIVE



Board to board connection in automotive mirrors.

INDUSTRIAL



Blind mating plug for industrial machinery
6 signal 1A+ 2 power
20A

PRECI-DIP SA Rue Saint-Henri 11 CH-2800 Delémont / Switzerland

PHONE +41 (0)32 421 04 00 FAX +41 (0)32 421 04 01 E-MAIL sales@precidip.com www.precidip.com