

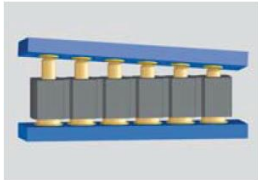
WATERPROOF & SEALED SPRING LOADED CONNECTORS



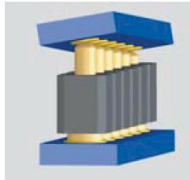
preci-dip

A FLEXIBLE SOLUTION FOR YOUR CONNECTIONS

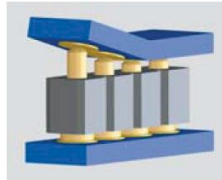
Spring Loaded Contacts facilitate blind mating requirements, are more tolerant to misaligned and non-coplanar mating conditions and are capable of achieving up to one million mating cycles.



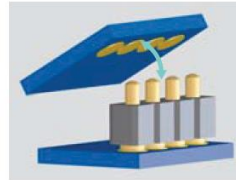
Accepts important positioning tolerances of the connectors.



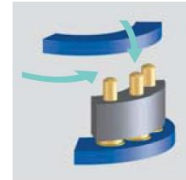
Connects surfaces non-perpendicular to the contact axis.



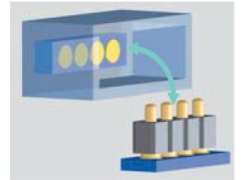
Compensates errors of parallelism and flatness



Connects pivoting or rotating elements.



Connects with sliding mating action (push & lock)



Suitable for blind mating

WATERPROOF & SEALED CONNECTORS

A wide range of custom possibilities

O-Ring / Shaft Seal

- O-RING on piston ensures sealing while the piston is moving.
- Ideal for docking station in harsh environments.

Flat or Lip Seal

- A flat or lip seal around contacts ensures the hermeticity of the area.
- Ideal for wire-to-board connectors in junction box, or similar applications.

Potting Process

- Potting around contacts ensures a perfect tightness of the connector.
- Ideal for IP-rated wire-to-wire connectors.

MANY APPLICATIONS OF PRECI-DIP WATERPROOF SLC CONNECTORS



11-Way hybrid spring loaded connector, mixing power and data. A lip seal ensures airtight integrity of the connection area.



The connector sealing is ensured by individual O-rings on each contact, as well as epoxy potting at the back end of the connector.



High-performance spring-loaded contact pin for portable monitoring devices. A shaft seal sits in a groove to ensure sealing after assembly.



This panel-mounted connection ensures signal transmission, while also meeting sealing requirements with its integrated O-rings.

PRECI-DIP

Connection Technology

Custom design is our main strength, and your advantage when your ideas need a development partner. Vast experience with countless standard products and more than 20,000 references. Everything under one roof worldwide: We master all key processes in-house, from raw materials to finished goods.

As a global company we comply with internationally recognized certifications, including ML-STD-790, ISO 9001, Aviasecure Cert, IATF 16949, ISO 14001, EN AS JIQS 9100, UL (E174442), Renewable Energy Certification and the Certificate Act-Energy Efficiency and Climate Protection, just to name a few.

Connected to Our End of the World.

PRECI-DIP is represented by dealers in 111 countries around the world. Contact us for detailed information.



preci-dip

PRECI-DIP SA

Rue Saint-Henri 11 P.O : Box 834 CH-2800
Delémont,
Switzerland
T +41 32 421 04 00
Contact us for more information:
sales@precidip.com

PRECI-DIP LLC

225 Oracal Parkway Ellabell
GA 31308
USA
T +1 912 851 0225
Contact us for more information:
salesusa@precidip.com

PRECI-DIP Connector Shanghai

4th floor, Building# 3 No. 58 Wenxiangdong
Road, Songjiang district
Shanghai, China, PC 201613
T +86 21 60291752
Contact us for more information:
sales@precidip.com